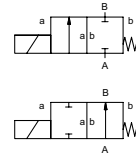


# lateral valve

## type **KBS 15**



**2/2 way valve** **direct acting**  
**pressure range** PN 0-500 bar  
**orifice** DN 1,5-3 mm  
**connection** thread  
**function** valve normally closed symbol **NC**  
 valve normally open symbol **NO**



**△** Above stated body materials refer to the valve port connections that get in contact with the media only!

**design** direct acting, with spring return  
**body materials** ① brass ②  
 ③ brass, nickel plated ⑤  
 ④ ⑥ stainless steel  
**valve seat** synthetic resin on metal  
**seal materials** NBR FPM

**details needed**

- orifice
- port
- function NC/NO
- operating pressure
- flow rate
- media
- media temperature
- ambient temperature
- nominal voltage

	general specifications			options			
<b>ports</b>	KBS	threads G 3/8		special threads			
<b>function</b>	NC			NO			
<b>pressure range</b>	bar	250	400	500	100	300	500
	DN	3	2	1,5	3	2	1,5
<b>Kv value</b>	l/min	5,2	1,3	1,1	5,2	1,3	1,1
<b>vacuum</b>	leak rate				< 10 <sup>-6</sup> mbar*ls <sup>-1</sup>		
<b>pressure-vacuum</b>	P <sub>1</sub> ↔ P <sub>2</sub>				upon request		
<b>back pressure</b>	P <sub>2</sub> > P <sub>1</sub>				upon request		
<b>media</b>	gaseous - liquid						
<b>abrasive media</b>							
<b>damping</b>	opening						
	closing						
<b>flow direction</b>	A ↔ B	as marked		bi-directional upon request			
<b>switching cycles</b>	1/min	270					
<b>switching time</b>	ms	opening 60		closing 160			
<b>media temperature</b>	°C	DC: -40 to +100					
		AC: -40 to +100					
<b>ambient temperature</b>	°C	DC: -40 to +80					
		AC: -40 to +80					
<b>limit switches</b>							
<b>manual override</b>							
<b>approvals</b>	WAZ						
<b>mounting</b>	mounting holes						
<b>weight</b>	kg	4,2					
<b>additional equipment</b>	upon request						

**⚠** The valves' technical design is based on media and application requirements. This can lead to deviations from the general specifications shown on the data sheet with regards to the design, sealing materials and characteristics.

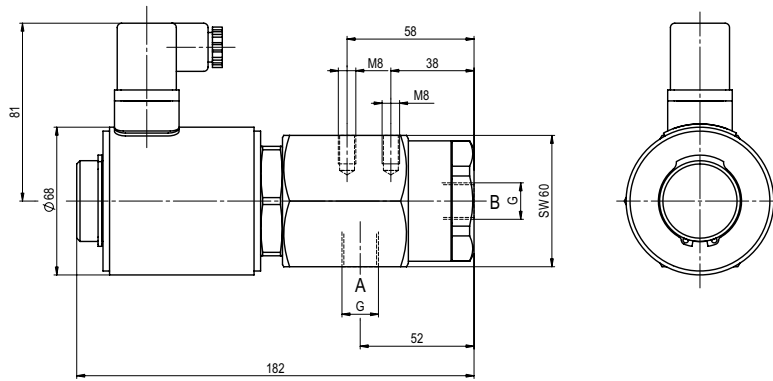
**⚠** If order or application specifications are incomplete or imprecise there exists a risk of an incorrect technical design of the valve for the required application. As a consequence, the physical and / or chemical properties of the materials or seals used, may not be suitable for the intended application.

	electrical specifications			options		
<b>nominal voltage</b>	U <sub>n</sub>	24 V	DC	special voltage upon request		
	U <sub>n</sub>	230 V	40-60 Hz AC	special voltage upon request		
<b>actuation</b>	DC	direct-current magnet				
	AC	direct-current magnet with integrated rectifier				
<b>insulation rating</b>	H	180°C				
<b>protection</b>	IP65					
<b>energized duty rating</b>	ED	100%				
<b>connection</b>	plug acc. DIN EN 175301-803 form A, 4 positions x 90° / wire diameter 6-8 mm			terminal box M16x1,5		
<b>optional</b>	M12x1	connector acc. DESINA				connector acc. VDMA
<b>additional equipment</b>						
<b>current consumption</b>		24 V	DC	2,30 A		
		230 V	40-60 Hz AC	0,24 A		
<b>explosion proof</b>						
<b>limit switches</b>						

■ specifications not highlighted are standard  
 ■ specifications highlighted in grey are optional

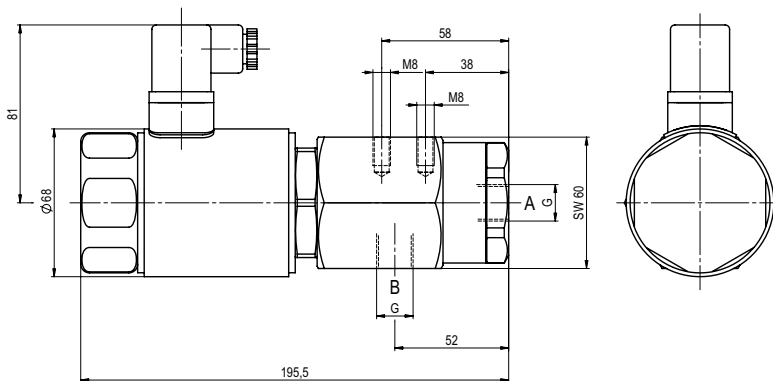
# type **KBS 15**

function: **NC**  
closed when not energized



# type **KBS 15**

function: **NO**  
open when not energized



The application-specific layout relating to temperature, pressure conditions, switching behavior, media and its consistency may restrict the range of use or necessitate relevant modifications to materials used and seal arrangements.

Rights reserved to make technical alterations • Not responsible for printing errors • Detailed drawings can be obtained upon request